

Index For “Gauges & Inserts” Section

Click on page numbers to the right of the description to jump you to that specific page.

Symbols

55’-56’ Chevy Dash Inserts.....118

C

Classic Instruments Gauges 116-120

D

Dash Inserts 118, 126, 127

Dakota Digital Gauges.....125

G

Gauge

Inserts118, 126, 127

Senders115, 120, 121

Gauges..... 115-120, 122-125

O

Oil Pressure Senders115, 120

P

Pulse Generators115, 120

Q

Quad Gauges118

S

Senders

Gauges.....115, 120, 121

Sky-Drive Speedo Drive121

Speedometer Cables.....121

T

Tach Cups126

U

Under Dash Extension126

V

VDO Gauges.....115

VHX Gauges..... 122-124

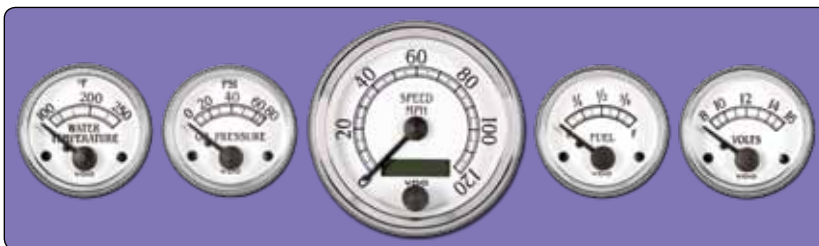
W

Water Temperature Senders115, 120

VDO - Cockpit Royale

Available in 3-1/8" or 3-3/8" Diameter
Speedometer & Tachometer

VDO



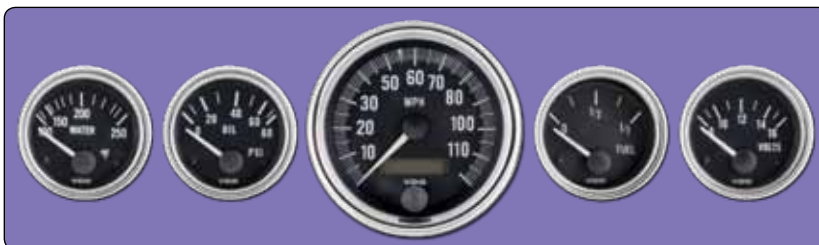
Classic look of the '30's and '40's with crisp white dials and brilliant chrome bezels and flat black antique design graphics.

5 Gauge Kit (Senders Included).....	3-1/8" Diameter VDO 600926\$409.95	3-3/8" Diameter VDO 600927\$409.95
Tachometer.....	VDO 333707\$ 89.95	VDO 333708\$ 91.95

VDO -Series 1

Speedometer & Tachometer
ONLY Available in 3-3/8" Diameter

VDO



Series 1 is designed to provide the traditional style of the '50s and '60s. A brilliant chrome ring accents the timeless black dial and white pointer.

5 Gauge Kit (Senders Included).....	3-3/8" Diameter VDO 600925\$409.95
Tachometer.....	VDO 333355\$ 89.95

VDO - Cockpit & Cockpit White

Available in 3-1/8" or 3-3/8" Diameter
Speedometer & Tachometer

VDO



Black bezels and red pointers with clean crisp numerals and minimal markings between numerals.

White Face 5 Gauge Kit (Senders Included)	3-1/8" Diameter VDO 600921\$409.95	3-3/8" Diameter VDO 600922\$409.95
White Face Tachometer	VDO 333251\$94.95	VDO 333255\$94.95
Black Face 5 Gauge Kit (Senders Included).....	VDO 600923\$409.95	VDO 600924\$409.95
Black Face Tachometer.....	VDO 333051\$91.95	VDO 333055\$91.95

Replacement VDO Senders Call For Individual Gauges

VDO

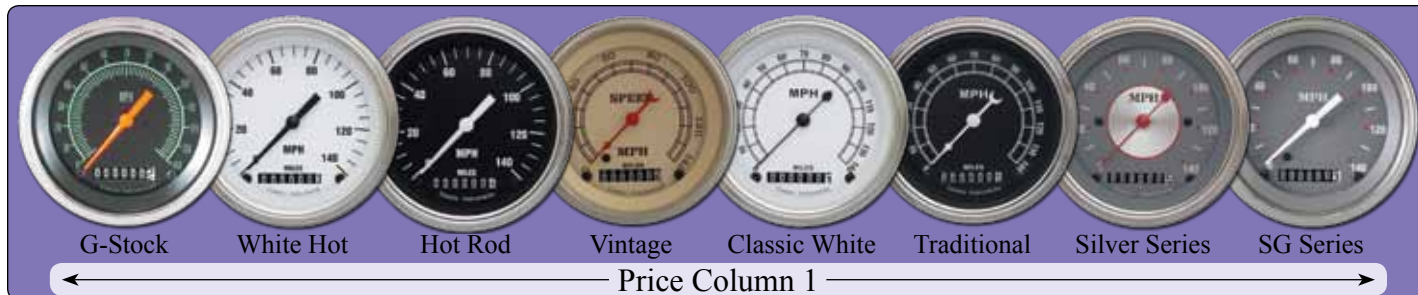


Temp Sender	3/8" NPT (Common Ford).....	VDO 323421	\$16.95
Temp Sender	1/2" NPT (Common GM)	VDO 323419	\$13.95
Fuel Level Sender	10-180 ohm - Unique to VDO - Adj tank depth 6" to 23"	VDO 226001	\$40.95
Oil Pressure Sender.....	80psi VDO oil pressure gauges.....	VDO 360003.....	\$33.95
Pulse Generator.....	GM thread-on connection type	VDO 340011	\$55.95

Order Toll Free: 1-800-495-3904
Tech. & Info. Line: 1-972-495-1557

SACHSE
Red Shop

Web: www.SachseRodShop.com
Email: sales@SachseRodShop.com



3-3/8" Diameter 5 and 6 Gauge Kits - Universal



Available in All Designs Shown Above

5-Gauge kits feature all electric gauges including an electric speedometer, oil pressure, water temperature, volt meter and fuel level gauges. Kits will also include a pulse generator to convert mechanical speedometer cable drive to an electronic signal to the speedometer, oil pressure sender, temp sender and adjustable height fuel level sender. Sockets, bulbs and instructions included.

	Column 1	Column 2	Column 3	Column 4
5-Gauge Kits (Shown)	\$459.95	\$574.95	\$694.95	\$519.95
6-Gauge Kits (Includes Tachometer)	\$559.95	\$694.95	\$799.95	\$619.95

5" Diameter (4-5/8" Hole) 5 and 6 Gauge Kits - Universal



Available in All Designs Shown Above Except V8 Speedster & Silver Series

5-Gauge kits feature all electric gauges including an electric speedometer, oil pressure, water temperature, volt meter and fuel level gauges. Kits will also include a pulse generator to convert mechanical speedometer cable drive to an electronic signal to the speedometer, oil pressure sender, temp sender and adjustable height fuel level sender. Illumination sockets and bulbs also included with quality instructions.



	Column 1	Column 2	Column 3	Column 4
5-Gauge Kits (Shown)	\$499.95	\$709.95	\$744.95	\$544.95
6-Gauge Kits (Includes Tachometer)	\$629.95	\$914.95	\$974.95	\$679.95

Attention Late Model Engine & Transmission Users

Whenever a Classic Instruments speedometer is used with an *Electronic Control Module* (ECM) or *Vehicle Speed Sensor* (VSS) the kit included speedometer pulse generator must be exchanged / upgraded to an *Interface Module* to convert the O.E.M. signal to what the Classic Instruments speedometer can read. This exchange requires an up-charge of \$45.00 to all Classic Instruments kit pricing.

Quad Gauge Kits Both 3-3/8" & 5" - Universal

Available in Designs Shown on Previous Page
Except for V8 Speedster & Silver Series in Either Diameter



A quad gauge is a single gauge which houses a fuel level, water temperature, volt meter and oil pressure gauge in one unit. Kits are complete as described on pervious page with these kits having the standard speedometer and quad gauge unit.

3-3/8" Diameter Pricing

	Column 1	Column 2	Column 3	Column 4
2-Gauge (Speed-o & Quad)	\$429.95	\$534.95	\$649.95	\$474.95
3-Gauge (Speed-o, Quad & Tach).....	\$529.95	\$654.95	\$789.95	\$579.95

5" Diameter Pricing

2-Gauge (Speed-o & Quad)	\$509.95	\$709.95	\$769.95	\$564.95
3-Gauge (Speed-o, Quad & Tach).....	\$639.95	\$914.95	\$984.95	\$694.95

Speedometer With Built-In Tach Gauge Kits Both 3-3/8" & 5" - Universal

Available in Designs Shown on Previous Page
Except for V8 Speedster & Silver Series in Either Diameter
3-3/8" Diameter All American Series Also Not Available



These innovative gauges feature the speedometer complete with odometer and a 180 degree sweep tachometer all housed in one assembly. Priced here are complete kits with senders and with either 4 small gauges or with a single quad gauge as described.

3-3/8" Diameter Pricing

	Column 1	Column 2	Column 3	Column 4
W/4-Small Gauges	\$639.95	N/A	\$799.95	\$664.95
W/Quad Gauge.....	\$599.95	N/A	\$804.95	\$609.95

5" Diameter Pricing

W/4-Small Gauges	\$829.95	\$959.95	\$999.95	\$849.95
W/Quad Gauge.....	\$814.95	\$959.95	\$999.95	\$839.95

Individual Classic Instruments Gauges

Call for Speedometers & Speedometers Including Tachometer - Senders Not Included



	Column 1	Column 2	Column 3	Column 4
Tachometer (3-3/8")	\$129.95	\$149.95	\$154.95	\$144.95
Tachometer (5")	\$154.95	\$219.95	\$244.95	\$174.95
Water Temperature	\$54.95	\$74.95	\$78.95	\$62.95
Oil Pressure	\$54.95	\$74.95	\$78.95	\$62.95
Volt Meter	\$54.95	\$74.95	\$78.95	\$62.95
Fuel Level (240-33ohm)	\$54.95	\$74.95	\$78.95	\$62.95

Order Toll Free: 1-800-495-3904
Tech. & Info. Line: 1-972-495-1557

SACHSE
Red Shop

Web: www.SachseRodShop.com
Email: sales@SachseRodShop.com

'55-'56 Chevy Car Gauge Package

Two Layout Styles to Choose From - Gear Select Gauge Is Optional - Bezel Not Included



Gauge system features all 6 gauges with 140 mph speedometer and 8000 rpm tachometer, fuel (0-30 ohm), oil, temp, and volt gauges on a textured face with smooth sweep areas. Completely assembled and ready to install into your existing bezel. Turn signals included along with wiring harness, hardware and all necessary sending units except the fuel level sender as the fuel level gauge is calibrated to read the factory 0-30 ohm range sender. Optional gear select fits behind window on an original Powerglide trim.

BelEra Layout (Original)	White, Gray, Black or Tan Face Color	\$784.95
BelEra-II Layout	Black, Tan, Gray or White Face Color	\$864.95
Gear Select Gauge W/Sender	State 3 Speed or Overdrive Transmission	\$169.95

'57 Chevy Car Gauge Kit



Three gauge kit fits the factory '57 Chevy car dash trim. The center gauge features speedometer, tachometer, volt meter, oil pressure and headlight high beam indicator. Other two gauges are water temperature and fuel level. Fuel level gauge comes standard to read the stock 0-30 ohm fuel level sender but can be ordered to read other ohm ranges. All

gauges are electric including speedometer and come with necessary senders except the fuel level sender as the fuel level gauge is calibrated to read the factory 0-30 ohm range sender.

'57 Gauge Kit	Black, Gray, White or Tan Face Color	\$784.95
---------------------	--	----------

'59-'60 Bel Air, El Camino & Impala Gauge Package



Available in Any Design on Page 116 that Offers 5" Diameter 5 Gauge Kits

Gauge system features the speedometer with red LED high beam and green turn signal indicators mounted in the face. Auxiliary gauges include fuel (0-30 ohm), oil, temp, and volt. The system comes complete with all necessary sending units except the fuel



level sender as the fuel level gauge is calibrated to read the factory 0-90 ohm range sender, mounting hardware and model specific adapter rings for installation into your existing stock gauge panel.

59-60 Chevy Full Size Gauge package	From \$649.95
---	---------------

'63-'65 Nova Gauge Package

Available in G-Stock, Hot Rod, White Hot, SG Series and Velocity Black or White - See Page 116



Nova cluster features 5" speedometer & quad and 3" tach in the center. All electric gauges come with all senders except the fuel level sender as the fuel level gauge is calibrated to read the factory 0-30 ohm range sender. Package comes with new oval shape lens and mounts to your stock or aftermarket front gauge bezel.

63-65 Nova Gauge Package	From \$844.95
--------------------------------	---------------

'67-'68 Camaro & Firebird Gauge Package

Available in Any Design on Page 116 that Offers 5" Diameter Speedometer W/Built in Tachometer

Gauge packages feature electronic 140 mph speed-o with built in turn signals in the face, 8,000 rpm tach, fuel (0-90 ohm), temp, volt and oil pressure assembled in a quality reproduction dash bezel. Gauges are ready to bolt in complete with brackets, wiring harness and sending units except the fuel level sender as the fuel level gauge is calibrated to read the factory 0-90 ohm range sender.



'67-'68 Camaro & Firebird Gauge PackageFrom \$999.95

'47-'53 & '54-Early '55 Chevy Truck Gauge Packages / Kits

Available in Any Gauge Design on Page 116 that Offers 5" Diameter Speedometer & Quad Unit

These kits include the 5" speed-o & quad gauge system of your choice along with special bezel adapters to allow them to fit the hole openings on these model trucks. '47-'53 Truck kits include not only slim bezel adapters but also a set of brackets that allow the gauges to mount to factory gauge cluster studs in the back of the dashboard. '54-Early '55 trucks had a bit larger gauge hole opening so this kit comes with an aluminum spacer rings which feature turn and high beam indicators in one ring. All necessary senders included with both kits including fuel level sender.



'47-'53 Chevy Truck Gauge PackagesFrom \$549.95

'54-Early 55 Chevy Truck Gauge PackagesFrom \$624.95

'55-'59 Chevy Truck Gauge Package

A complete retrofit gauge unit incorporating a tachometer and cool looking LED lighting while retaining an original look. This gauge cluster features a dual layer design 12-volt electronic movement and push button calibration. Gauge panel comes fully assembled complete with a reproduction chrome bezel and all necessary



senders except the fuel level sender as the fuel level gauge is calibrated to read the factory 0-30 ohm range sender.
'55-'59 Gauge Package.....Black, White, Tan or Gray Face Color \$864.95

'67-'72 Chevy Truck Gauge Package

Available in Any Gauge Design on Page 116 that Offers 5" Diameter Gauge Kits



Bolt in package features 5" 140 mph speedometer with blue high beam indicator in the face, 5" 8000 rpm tachometer, 3" clock and 2" fuel level (0-90 ohm), water temperature, volt meter and oil pressure gauges. System includes the dash bezel, pre-wired electrical connections with wiring harness, mounting hardware and all necessary sending units except the fuel level sender as the fuel level gauge is calibrated to read the factory 0-90 ohm range sender



'67-'72 Chevy Truck Instrument Cluster From \$919.95

Order Toll Free: 1-800-495-3904
Tech. & Info. Line: 1-972-495-1557

SACHSE
Red Shop

Web: www.SachseRodShop.com
Email: sales@SachseRodShop.com

'65-'66 Mustang Gauge Package

Available in Many of the Styles Offered on Top of Page 116 - Check Our Site for More Information



Kit includes gauges with mounting brackets, hardware, instructions and sending units except the fuel level sender is not included as the included fuel level gauge reads the factory ohm range 75-10. Gauges are held to the trim bezel from the back side with supplied bracket system. Dash bezel not included. '65-'66 Mustang 5-Gauge Package.....Starting At \$589.95

'67-'68 Mustang Gauge Package

Available in Many of the Styles Offered on Top of Page 116 - Check Our Site for More Information



'67-'68 Mustang gauge clusters come completely assembled pre-wired by hand and mounted in a premium quality reproduction OEM dash bezel ready to bolt in. This package plugs right into your car's wiring with optional wiring harnesses sold separately. Turn signal and high beam indicator included.Starting At \$999.95

'53-'55 Ford Truck Gauge Packages



Gauge panel includes 140 mph speedometer, 8000 tachometer, fuel level (75-10 ohm), oil, temp and volt gauges installed in a housing and accented by a machined aluminum bezel. The completely assembled package features push button calibration, LED illumination, integrated turn signals, and blue halo high beam indicator, wiring harness and all necessary sending units. White, Black, Grey or Tan.... \$939.95

56 Ford Truck Gauge Packages



Electronic gauge cluster features speedometer, tachometer, fuel level (75-10 ohms), water temp, oil pressure and volt gauges. Also features a multi-layer dial design, OE styled graphics, red pointers, original styled green arrow turn indicators, red Halo high beam, LED illumination and easy connector for wiring. Tan, White, Black or Grey \$939.95



Replacement Senders for Classic Instruments Gauges

Temp.....12MM (Metric - LS Engines)	CLC SN12MM.....	\$25.95
Temp.....3/8" NPT (Common Ford).....	CLC SN24	\$21.95
Temp.....1/2" NPT (Common GM)	CLC SN25	\$21.95

Fuel Level	240-33 ohm (Most aftrmrkt gauges - 6" to 24" adj. height)	TNK TAN-SW	\$34.95
Fuel Level	0-30 ohm (GM up to '66 - 6" to 24" adj. height)	TNK TAN-GME.....	\$34.95
Fuel Level	0-90 ohm (GM '66 & Later - 6" to 24" adj. height)	TNK TAN-GML.....	\$34.95
Fuel Level	75-10 ohm (Ford '86 & Earlier - 6" to 24" adj. height)	TNK TAN-ORG.....	\$34.95
Oil Pressure	100psi Classic Instruments Gauges	CLC SN52	\$31.95
Pulse Generator	16-Pulse for newer Classic speed-o W/12 dip switches.....	CLC SN16	\$81.95

"Sky-Drive" GPS Speedometer Drive Unit

Sky Drive is the world's most accurate electronic speedometer sending unit by using GPS Satellite signals to operate your electronic speedometer. No need for ECU convertors or pulse signal generators screwed onto your transmission. Calibration is easy by adjusting the pulse rate from the Sky Drive to make your speedometer read a particular MPH then take it out of calibration mode and your set without leaving your driveway. Measures only 3" x 2" x 1" tall.

"Sky-Drive" GPS Speedometer Sending Unit CLC SN81 \$249.95



Speedometer Push-Button Interface Module

Will Work with Most Aftermarket Speedometers

This interface module with push button which allows electronic speedometer calibration by simply pushing the button, drive one measured mile, push the button again and your done. Also includes additional 8,000 ppm output signal for cruise control. Can be used with early transmissions using external pulse generators and late model transmissions using internal speed sensors.

Speedometer Push-Button Interface Module CLC SN74 \$99.95



ECM Tach Signal Adapter (GM LS Engines)

For Use With *Classic Instruments* Tachometers

Some engines only offer a tachometer signal wire directly form the ECM. This adapter interfaces between the factory ECM tach signal wire and converts it to a signal the *Classic Instruments* tachometer can read.

ECM Tach Signal Adapter CLC SN76 \$64.95



Ford Transmission Pulse Generator Adapter

Simple bullet insert that fits the earlier mechanical speedometer drive type Ford transmissions and allow the more common GM style pulse generator to attach to it.

Ford Transmission Pulse Generator Adapter CLC SN17 \$21.95



Speedometer Cable Kits

U-Cut-To-Fit - Fits GM & Chrysler 727/904 Transmissions (Ford Available)

Premium Teflon lined housing with machined aluminum fittings. Fits for any cable driven aftermarket speedometer with 5/8"-18 male thread at the speedometer. Transmission end threads onto the factory driven gear adapter. 7' Long but can be cut-to-fit.

Black Housing LKR SP-1500U \$81.95

Braided Stainless Housing LKR SP-1501HT \$129.95



Allows use of a mechanical cable speedometer to be used with a modern transmission which provides only an electronic output. Quiet operation allows installation inside the cabin or case is waterproof allowing it to be mounted under the hood. Easy calibration with a remote mounted switch by 'measured-mile' as well as speed adjustment while driving based on a known-speedometer reading makes setup simple. Unit comes supplied with 36" cable with 5/8"-18 thread-on, GM clip-on or Ford clip-on style cables. Measures 5" x 4-1/8" x 2-3/16" \$299.95

Dakota Digital

Electronic Cable Drive

Back



Front



Order Toll Free: 1-800-495-3904
Tech. & Info. Line: 1-972-495-1557

SACHSE
Red Shop

Web: www.SachseRodShop.com
Email: sales@SachseRodShop.com

Direct Fit VHX Gauge Panels

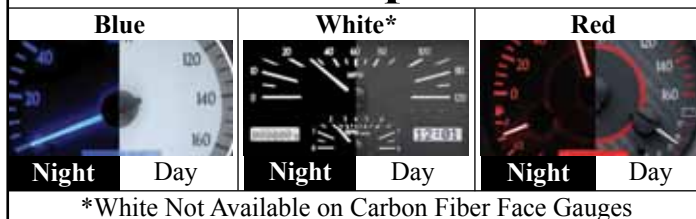
Dakota Digital

The VHX Series is a leap forward in gauge technology. Utilizing solid state sensors with microprocessor technology driving precision stepper motors, the VHX system gives the driver unparalleled accuracy in an aftermarket gauge. All feature backlit needles, numerals and markings transforming their daytime look at night. All units have built in indicators for turn, high beam, check engine, brake, cruise, plus and have the ability to display gear selection full word indication (requires sender). The LCD message centers are user-customizable to display multiple functions such as digital display of any of the six analog gauges in real-time reading, odometer, a/b trip odometer, re-settable service odometer, high speed recall, plus many more. With additional modules almost any reading can be displayed such as compass, outside temp, boost etc. Kits include speed sensor to convert a mechanical cable to electric signal, oil and water temp sensors. This system can read an OEM fuel sender or any aftermarket fuel sender, but a fuel level sending unit is not included with these kits.

Face Style Options



Color Options



Ford Passenger Car

'32\$804.95
'33-'34.....\$804.95



Ford Passenger Car

'35-'36 & '39std\$804.95
'37-'38.....\$804.95
'40\$759.95



'50-'51 Ford & Mercury

'49-'50.....\$759.95
'51\$759.95
'50-'51 Mercury.....\$854.95



Chevy Passenger Car

'37-'38.....\$804.95
'40\$804.95
'49-'50.....\$759.95



Chevy Passenger Car

'53-'54.....\$759.95



Mustang

'65-'66.....\$759.95
'67-'68.....\$759.95
'69-'70.....\$759.95
'71-'73.....\$759.95
'79-'86.....\$759.95
'87-'89.....\$759.95
'90-'93.....\$759.95



Chevy Passenger Car

'55-'56.....\$759.95



Chevy Passenger Car

'57\$759.95



Camaro

'67-'68.....\$759.95
'69\$759.95
'70-'81.....\$759.95
'82-'89.....\$759.95



Chevy II / Nova

'63-'65.....	\$759.95
'66-'67.....	\$759.95
'69-'76.....	\$759.95



Corvette

'58-'62.....	\$1424.95
'63-'67.....	\$1234.95
'68-'77.....	\$1424.95
'78-'82.....	\$1424.95



Impala

'58.....	\$804.95
----------	----------



Impala

'59-'60.....	\$759.95
'61-'62.....	\$759.95
'63-'64.....	\$759.95
'65.....	\$804.95



Impala

'66.....	\$804.95
'67.....	\$804.95
'68.....	\$804.95
'69-'70.....	\$804.95
& Caprice '71-'76.....	\$804.95
& Caprice '77-'90.....	\$804.95



Chevelle & Monte Carlo

'64-'65.....	\$759.95
'66-'67.....	\$759.95
'68.....	\$759.95
'69.....	\$759.95
SS '70-'72.....	\$854.95
& Malibu '70-'72.....	\$759.95
Monte Carlo '78-'88.....	\$759.95



Oldsmobile

'49-'50.....	\$759.95
'78-'88 Cutlass.....	\$804.95



Pontiac

'64-'67 GTO.....	\$804.95
'70-'72 GTO.....	\$804.95
'69 Firebird.....	\$759.95
'70-'80 Firebird.....	\$804.95



Buick

'84-'87 Regal.....	\$759.95
--------------------	----------



Miscellaneous

'55-'86 Jeep CJ.....	\$759.95
'62-'84 Toyota FJ40.....	\$759.95



Ford Pickup

'53-'55.....	\$759.95
'56.....	\$759.95
'67-'72.....	\$759.95
'73-'79.....	\$759.95



Ford Bronco

'66-'77.....	\$759.95
--------------	----------



Chevy Pickup

'47-'53.....	\$759.95
'54.....	\$759.95



Chevy Pickup

'55-'59.....	\$759.95
'60-'63.....	\$759.95
'64-'66.....	\$759.95



Chevy Pickup

'67-'72.....	\$854.95
'73-'87.....	\$759.95
'88-'94.....	\$759.95

Order Toll Free: 1-800-495-3904
Tech. & Info. Line: 1-972-495-1557

SACHSE
Red Shop

Web: www.SachseRodShop.com
Email: sales@SachseRodShop.com

5 & 6 Gauge Round Universal VHX Kits



Black & Silver Alloy Faces Only, Carbon Fiber Not Offered In These Round Gauges

Dakota Digital

Speedometer and Tachometer cutouts for 3-3/8" hole, small gauges cutout 2-1/16".



5-Gauge Kits Choose Black or Silver Face and Blue, White or Red Display \$679.95
6-Gauge Kits Choose Black or Silver Face and Blue, White or Red Display \$854.95

2 Gauge Universal VHX Kits



Dakota Digital

Gauge housings machined from 6061 aluminum, finished in flawless chrome plating. 5-7/16" Outside diameter requiring a 5" cutout and requiring less than 2" in depth

2-Gauge Kits Choose Black, Silver or Carbon Fiber Face and Blue, White or Red Display \$759.95

Universal Elliptical VHX Gauge Panel



Dakota Digital

The new universal Elliptical gauge cluster measures 12-1/16" wide, 5-11/16" tall. Gauge unit features billet housing and bezel in chrome finish.

Elliptical Panel Choose Black, Silver or Carbon Fiber Face and Blue, White or Red Display \$804.95



Universal Oval VHX Gauge Panel

Dakota Digital

Recessed Oval gauge cluster measures 11-7/16" wide", 4-7/16" tall. Gauge unit features billet housing and bezel in chrome finish.

Oval Gauge Choose Black, Silver or Carbon Fiber Face and Blue, White or Red Display \$804.95

Dakota Digital VFD Digital Gauge Systems

Many Many More Applications Available - Call, Email or Check Our Web Site for More Information

Representing the latest electronic dashboard technology the Dakota Digital VFD digital instrumentation uses state of the art vacuum fluorescent display technology to give you up-to-date and accurate information. As used in several production automobiles, vacuum fluorescent displays give superior performance and visual appeal over LCD or LED display systems. Emitting a blue or teal/green light the VFD system boasts excellent daytime visibility and is dimmable for nighttime driving. Utilizing solid state senders and microprocessor technology the digital accuracy will give you quality service for miles down the road. Standard colors for the digital display is blue or teal, custom colors available at a higher cost.



Universal Elliptical System

Offered in 5 or 6 gauge with brushed satin aluminum or chrome plated bezel. From \$659.95



Universal Oval Panel

6-gauge only system and chrome finish multi-step bezel measuring 12" x 4-1/4" \$759.00



Universal Round Gauges

6-gauge gauges 4-3/4" O.D. and require 4-1/2" hole. Chrome bezels. \$689.00



Chevy Passenger Car

'32	\$644.95
'33-'34 Master	\$689.95
'33-'35 Standard	\$689.95
'35 Master-'36	\$689.95
'37-'38	\$644.95
'39	\$644.95
'40	\$644.95
'41-'48	\$654.95



Chevy Passenger Car

'55-'56	\$569.95
'57	\$609.95



Camaro

'67-'68	\$594.95
'69	\$784.95
'70-'81	\$759.95
'82-'89	\$644.95



Impala / Caprice

'58	\$689.95
'59-'60	\$634.95
'61-'62	\$689.95
'63-'64	\$689.95



Mustang

'65-'66	\$594.95
'67-'68	\$644.95
'69-'70	\$689.95
'71-'73	\$604.95



Chevy Pickup

'40-'46	\$644.95
'47-'53	\$654.95
'54	\$654.95
'55-'59	\$569.95
'67-'72	\$664.95



Ford Passenger Car

'32	\$644.95
'33-'34	\$644.95
'35-'36	\$644.95
'37-'38	\$644.95
'39	\$644.95
'40	\$644.95
'42-'48	\$644.95



Ford Pickup

'35-'37	\$644.95
'40-'47	\$644.95
'48-'50	\$644.95
'51-'52	\$689.95
'53-'55	\$644.95
'56	\$644.95
'57-'60	\$594.95

Order Toll Free: 1-800-495-3904
Tech. & Info. Line: 1-972-495-1557

SACHSE
Red Shop

Web: www.SachseRodShop.com
Email: sales@SachseRodShop.com

'47-'53 Chevy Truck Under Dash Extension



Fiberglass under dash extension panel is designed to hold 4 round 2-1/2" A/C outlets. Holes must be cut into extension and will accept most manufactures A/C



outlets such as Vintage Air & Billet Specialties. Extension panel spans full width at 52-1/2" wide and measures 2-1/2" tall between outlets and 4-1/2" tall out outlet bulges. Vertical front features smooth roll to run to the underside.

'47-'53 Chevy Truck Under Dash Extension..... SRS 4800 \$179.95

'32 Style Dashboard for '28-'31 Ford's

Stamped steel dashboards are shaped like the famous '32 Ford piece but bolt into your model A. Panels mount behind the dash rail and use the same holes for mounting. Listed for closed cars but dashes for open cars available by special order.



'28-'29 Closed BRK A-136-AF-CC ... \$174.95

'30-'31 Closed BRK A-136-BF-CC ... \$174.95



Machined Billet Tach Cups

Steering Column Mount - Available For 2", 2-1/4" & 2-3/8" (GM) Diameter Columns

CNC machined billet aluminum cups are some of the most intricately machined pieces we've seen. Designed so when installed no mounting hardware is visible. Cup allows tach to be rotated so mounting the cup offset to one side of the column while keeping tach face straight. The opening of the cup is machined specific to fit on only certain tachometers so that each tach fits its cup perfectly. Available for *Classic Instruments*, *Stewart Warner "Wings"*, *VDO* (3-1/8"), *Ford Motorsport (SVO)* & *Autometer Designer Series* (3-1/8").



Polished Aluminum Tach Cup \$172.95



Trim Style Dash Panels

Gauges Not Included - 3-3/8" Large Hole, 2-1/16" Small Hole



These innovative *Trim Style* dash panels are machined from billet aluminum and polished to a mirror finish. The panel's universal design allows it to be mounted with the machined ribs on the top or bottom. Fits most gauges including *Autometer*, *Classic Instruments*, *Stewart Warner*, *VDO*, and *Ford Motorsport*.



5-Gauge Panel..... BLT 36525 \$69.95

6-Gauge Panel..... BLT 36535 \$79.95



Aluminum Under-Dash Gauge Panels

Get away from that cheap chrome gauge mount with one of these quality under-dash mounts made from billet aluminum. Accepts the small 2"(ish) gauges from these gauge manufactures. Not all are the same as these mounts are machined for specific gauges as a reveal is cut into the front to fit unique gauge bezel dimensions.



2-Gauge \$39.95

3-Gauge \$49.95

4-Gauge \$49.95

AutoMeter & VDO BOE 94023.....

BOE 94033.....

BOE 94043

Classic & Dolphin..... BOE 94024.....

BOE 94034.....

BOE 94044

Application Specific Dash Panels - Gauges Not Included

Research What Gauge The Insert is Made to Fit Before You Buy Your Gauges!

Many More Applications Available - Call, Email or Check our Web Site for More Information

Aluminum gauge insert panels made for specific make and model cars and trucks. Most inserts mount in the stock gauge cluster openings for the listed vehicle and most come with provision for turn and high beam indicators (not included). Since gauges are not standardized not only the diameter but also be bezel relief cuts in the panels are specific to a particular gauge. Please call or email to get specifics about any insert as they are manufactured specifically for each manufactures gauges and gauge diameter. Not all panels are available for all gauge manufacturers in all diameters.



Chevy Car '41-'48



4-Gauge (Only) 4 Small Gauge Insert Left of Speedometer.....\$84.95
Speedometer..... Speedometer Only - 3-1/8", 3-3/8" or 5"\$79.95
Clock / Tach Pass Side Avail. for 2", 3-1/8", 3-3/8" or 5"\$79.95

Chevy Truck '47-'53



5-Gauge.....\$144.95
2-Gauge..... 3-3/8" or 5"\$99.95

Chevy Car '37-'38



5-Gauge.....\$99.95
2-Gauge.....\$99.95

Ford Car '32



5-Gauge.....\$109.95
2-Gauge.....\$109.95

Chevy Truck '54-'55



5-Gauge.....\$109.95
2-Gauge..... 3-3/8" or 5"\$109.95

Chevy Car '53-'54



5-Gauge..... 3-(1/8" & 3/8")\$99.95
5-Gauge..... 5"\$149.95

Galaxie '59



5-Gauge.....\$99.95

Chevy Truck '55-'59



5-Gauge..... 3-1/8"\$99.95
5-Gauge..... 3-3/8" (Rear Mt) . \$139.95
2-Gauge.....\$109.95

Chevy Car '55-'56



5-Gauge..... 3-1/8"\$139.95
2-Gauge..... 3-3/8"\$99.95
Clock Insert.....\$74.95

Fairlane '64



3-Gauge..... 3-3/8"\$139.95

Ford Truck '48-'50



5-Gauge.....\$99.95

Camaro '67-'68



5-Gauge..... AutoMeter Pro-Comp
(1) 5" & (4) 2-1/16" ...\$149.95
2-Gauge..... (2) 5" Gauges\$149.95

Dodge Car '33-'34



5-Gauge.....\$124.95

Ford Truck '53-'55



5-Gauge.....\$109.95
2-Gauge..... 3-3/8" or 5"\$109.95
6-Gauge..... 3-1/8"\$109.95

Plymouth '33-'34



5-Gauge.....\$124.95